

**OUR PRODUCTS  
ARE IN STOCK AND  
READY TO SHIP**

# CustomCube Interloc Panels

The new standard in hospitals, assisted living facilities, medical clinics and anywhere simple room dividing privacy is needed.

## WHY PEOPLE ARE MOVING TO INTERLOC SNAP SYSTEM:

We understand custom cubicle curtains are a necessity for all hospitals, clinics and medical facilities. CustomCube.com has over 40 years of experience fabricating and providing custom cubicle curtain systems per our customers specifications. At CustomCube.com, we excel in providing the best quality cubicle and privacy curtains, supplies and hardware to the healthcare industry. We work with all the major fabric companies and make your cubicle curtains to your specifications with your specified fabric or our standard fabrics.

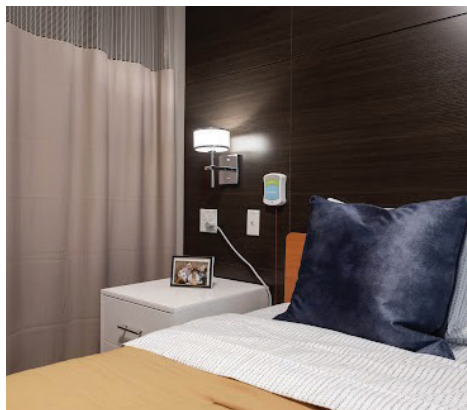
## TRUSTED BY:



AND MANY MORE



**EASY TO  
INSTALL**



**EASY TO CLEAN  
AND REPLACE**

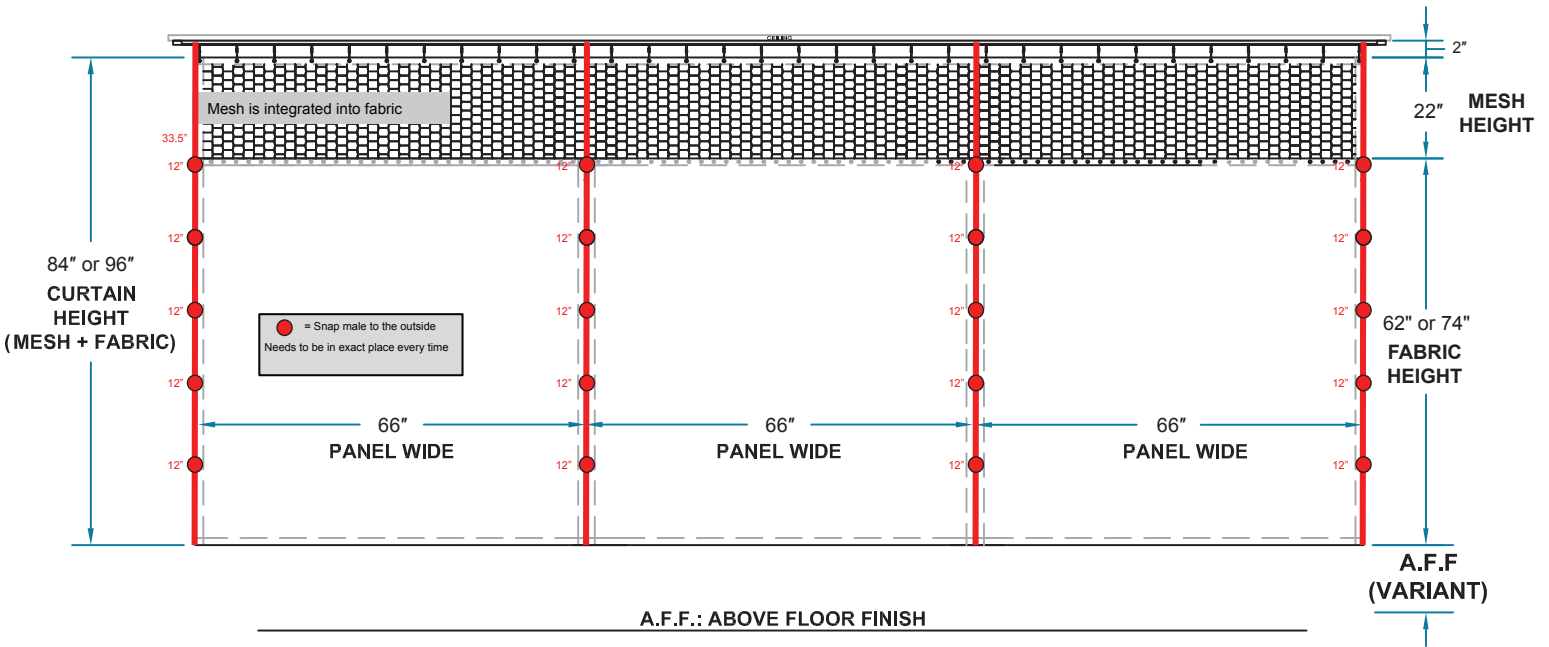


**QUALITY AND  
COST EFFECTIVE**

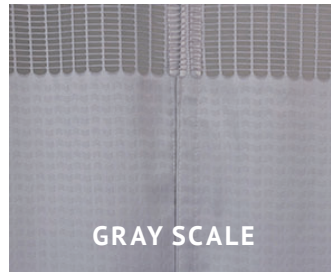
customcube.com | TOLL-FREE 1-866-252-2568  
676 Mendelssohn Ave N, Golden Valley, MN 55427

**custom**   
curtain systems .com

# InterLoc Modular Curtain System

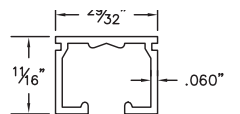
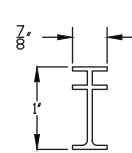


### 3 fabric colors to choose from

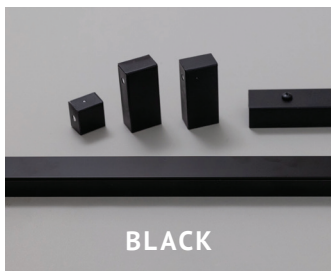
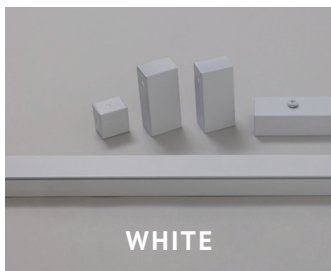


Flexible Track

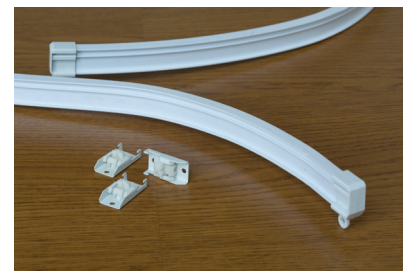
Aluminum Track



### 3 aluminum track colors to choose from



### Flexible Track





# InterLoc Modular Curtain System

## WIDTH

66" (167.64 cm) , including 20-22" (51-56 cm) integral mesh

## CONTENTS

82.7% polyester, 17.3% polyester FR

## RECYCLED CONTENT

82.7% post-consumer

## REPEAT

Border print, 26" (66 cm) horizontal repeat

## ABRASION RESISTANCE

ASTM D4157: 20,000 double rubs

## FIRE TEST

Passes NFPA 701 (test 1, small scale) Meets NFPA 13  
Sprinkler System Code: mesh openings are 70% or larger  
Passes CAN/ULC-S109-14

## COLORFASTNESS

AATCC-16 Colorfastness to Light: meets requirements, 60 hours  
AATCC-61 Colorfastness to Laundering: test on file  
AATCC-116 Colorfastness to Wet & Dry Crocking: meets requirements

## ADDITIONAL TESTS

AATCC-96 Dimensional Changes in Laundering: test on file  
ASTM D3512 Pilling: test on file  
ASTM D434 Seam Slippage: meets requirements

## MARINE GRADE SNAPS

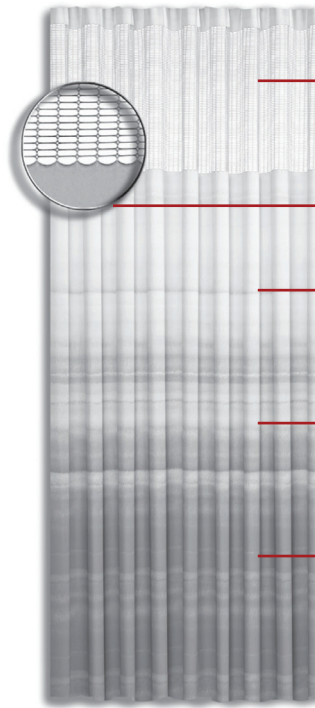
Rustproof, nickel-plated brass grommets placed every 12" along the length of each panel to lock into one another

## HEALTHIER HOSPITALS INITIATIVE (HHI)

Integral Mesh printed fabrics require 80% less water and 50% less energy to convey color, further reducing environmental impact. In accordance with HHI, integral mesh fabrics contain no formaldehyde or stain resistant finishes. Integral Mesh fabrics are free from PVC and do not include antimicrobials or intentionally added flame retardants.

## WARRANTY

Material is warranted to be free of manufacturer defects for a period of one year based upon end user following recommended care instructions



Our 4" (10 cm) fabric header triple folds to reinforce grommets and ensure strong construction.

One-piece knit construction provides continuity of color and design.

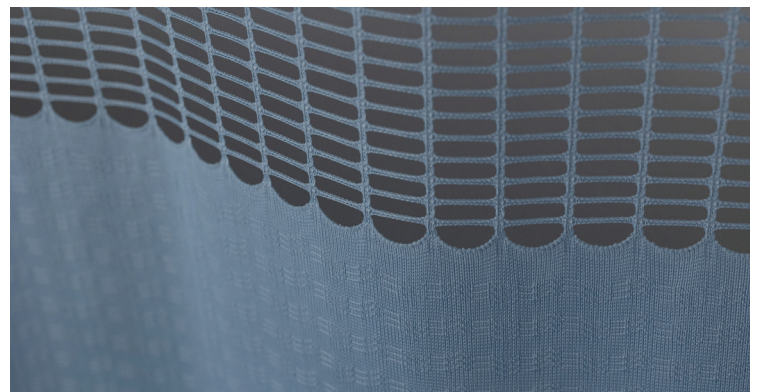
No puckering, no shrinking and no weakness will occur because of our unique, patented one-piece construction.

Our curtain, knit 102" (259 cm) wide, requires no fabric repeat or seaming, which translates to considerable cost savings.

Retaining its shape through frequent launderings, our curtain always hangs and stacks beautifully.

## LAUNDRER

Ensure laundering machinery is free of burrs or sharp objects that can cause snagging. Wash with like colors. Do not combine with other products such as towels, sheets, napery, etc. Do not overload machinery. Machine wash warm (120 -160 F). Use non-chlorine bleach if needed. Do not use any fabric softeners. Dry with like colors and products. Do not overload the dryer. Tumble dry on medium (140 F). Promptly remove from dryer. Use iron on low setting if needed. test on file ASTM D434 Seam Slippage: meets requirements



## THIS FABRIC MEETS OR EXCEEDS ACT STANDARDS

